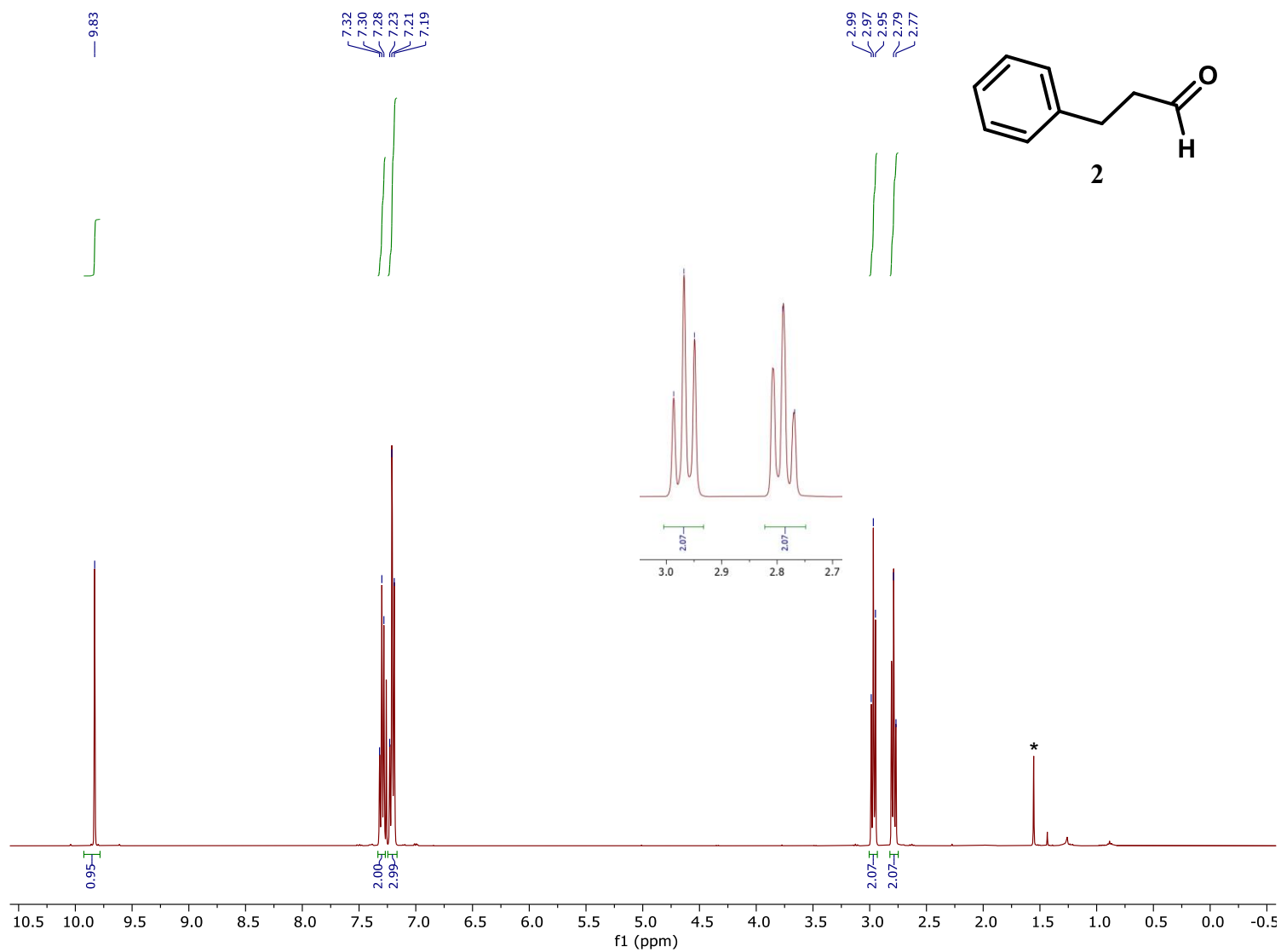


3-phenyl-propionaldehyde **2**  $^1\text{H}$  NMR (400 MHz,  $\text{CDCl}_3$ , 298 K)



\*although appearing prominent, residual water (from  $\text{CDCl}_3$ ) peak comprises only  $\sim 1.4\%$  of sample by weight (integration = 0.22 when integrated against signals of **2**)